

## Food Safety

All commercial fishing vessels engaged in fishing activity are registered as Food Business Operators with the SFPA. Detailed information is available on [www.sfpa.ie](http://www.sfpa.ie)

It is the responsibility of all Food Business Operators to ensure the safety of food they supply for human consumption.

Food Business Operators must have in place an effective traceability system for all food supplied for human consumption.

Further information is available in the SFPA 'Guide to Good Practice for Hygiene on Fishing Vessels' and your local Sea-Fisheries Protection Officer.

For disease control reasons the legislation relating to Animal by Products prohibits the use of fish waste of farmed origin for bait.

Vessels should carry on board insulated trays/bins with ice. Fish should be properly iced immediately after capture and the chilling process should continue after landing. This is particularly important in the case of mackerel which is susceptible to the accumulation of a food poisoning toxin called histamine if not handled hygienically or iced properly after capture.

Live bivalve molluscs, including cockles, oysters, mussels and clams intended for human consumption may only be harvested from areas which have been Classified for that purpose by the SFPA and which have an 'open' status under the biotoxin monitoring programme. A complete list of classified areas is available at [www.sfpa.ie](http://www.sfpa.ie). Detailed information on the Classification process is provided in the 'Code of Practice for the Microbiological Monitoring of Bivalve Mollusc Production Areas' which is available at [www.sfpa.ie](http://www.sfpa.ie) or from your local port office.

Bivalve Molluscs landed from an Irish Fishing Vessel must be accompanied by a Shellfish Registration Document (Gatherer's Document). This applies to all bivalve mollusks and gastropods from both wild fisheries and aquaculture sites, including: Oysters, Mussels, Sea Urchins, Abalone, Scallops, Cockles, Razor Clams, Whelks and Periwinkles. Books of Shellfish Registration Documents are available from your local SFPA Office.

## Important Notice: Force Majeure

'Force Majeure' is a common term which describes a situation where due to a circumstance beyond a person's control that person cannot fulfill an obligation e.g. an obligation to comply with a regulatory requirement. *The SFPA holds that there is no circumstance where an obligation to comply with a sea-fisheries regulation will ever be given precedence over the safety of a fishing vessel or its crew.*

If in any circumstance the Master of a fishing vessel feels they are obliged to return to port for safety reasons he should do so without delay. As soon as is possible or upon entry into port the Master should advise the SFPA of his revised port entry time and await authorisation to commence the discharge of any onboard catch.

## SFPA Offices and Contact Details

<p><b>Clonakilty</b> Park Road, Clogheen, Clonakilty, Co. Cork.</p> <p>T: 353 23 8859300 F: 353 23 8859720 <a href="mailto:sfpa_info@sfpa.ie">sfpa_info@sfpa.ie</a></p>	<p><b>Cork, Mahon</b> Oak House, Bessboro Road, Mahon, Co. Cork.</p> <p>T: 353 21 4515100 F: 353 21 4515121 <a href="mailto:sfpa_info@sfpa.ie">sfpa_info@sfpa.ie</a></p>	<p><b>Dunmore East</b> Harbour Office, Dunmore East, Co. Waterford.</p> <p>T: 353 51 383135 F: 353 51 383045 <a href="mailto:Dunmore@sfpa.ie">Dunmore@sfpa.ie</a></p>
<p><b>Killybegs</b> Fishery Harbour Centre, Killybegs, Co. Donegal.</p> <p>T: 353 74 9731264 F: 353 74 9731819 <a href="mailto:Killybegs@sfpa.ie">Killybegs@sfpa.ie</a></p>	<p><b>Ros an Mhil</b> Lán-Ionad, Ros a Mhil, Co. na Gaillimhe</p> <p>T: 353 91 572405 F: 353 91 572585 <a href="mailto:Rossaveal@sfpa.ie">Rossaveal@sfpa.ie</a></p>	<p><b>An Daingean</b> An Caladh, An Daingean, Co. Chiarraí.</p> <p>T: 353 66 9152122 F: 353 66 9151489 <a href="mailto:Dingle@sfpa.ie">Dingle@sfpa.ie</a></p>
<p><b>Castletownbere</b> Harbour Office, Castletownbere, Co. Cork.</p> <p>T: 353 27 70439 F: 353 27 70094 <a href="mailto:Castletownbere@sfpa.ie">Castletownbere@sfpa.ie</a></p>	<p><b>Howth</b> Auction Hall, West Pier, Howth, Co. Dublin</p> <p>T: 353 1 8321910 F: 353 1 8321911 <a href="mailto:Howth@sfpa.ie">Howth@sfpa.ie</a></p>	<p><b>Greencastle:</b> Contact Killybegs</p> <p><b>Kilmore Quay:</b> Contact Dunmore East</p> <p><b>Clogherhead:</b> Contact Howth</p>



## Guide to Compliance

### for the Irish Inshore Fleet

A concise guide to the legal requirements which apply to under-15 metre Fishing Vessels operating in Irish Inshore Waters



July 2010

### Acknowledgements

The SFPA would like to acknowledge the co-operation and assistance given by the Irish South and East Fish Producers Organisation and the Sea Fisheries Protection Consultative Committee in the production of this Guide.

## Introduction

This document summarises the principle requirements that apply to Irish Registered Fishing vessels in the under 15 metre fleet operating in Irish Inshore waters. Whilst this document constitutes a concise guide to the requirements it does not purport to represent a detailed legal interpretation of the legislation. Vessel owners should contact their local Sea-Fisheries Protection Officer for specific individual advice.

## Inspections

Persons in charge of vessels are obliged to co-operate with any onboard inspection to verify compliance with legislation.

In your dealings with the SFPA you can expect to be treated courteously, with consideration and in a non-discriminatory way. In return the staff and officials of the SFPA expect to be treated with courtesy and to receive all reasonable cooperation.

The SFPA has a comprehensive “Code of Conduct for Fishing Vessel Inspections” available from local SFPA offices or at [www.sfpa.ie](http://www.sfpa.ie)

If you feel that you have been unfairly or unreasonably treated by any staff member or action of the SFPA you may make a complaint. It would be usual to attempt to resolve your complaint by contacting the Senior Port Officer in the local SFPA office in the first instance. Refer to [www.sfpa.ie](http://www.sfpa.ie) for full details

## Quota Restrictions

Species specific quota restrictions apply to all vessels including vessels less than 10m in overall length.

Current details of quota restrictions are published by the Department of Agriculture Fisheries and Food in regular Fisheries Management Notices (FMN's). These FMN's are available on the DAFF website at [www.agriculture.gov.ie](http://www.agriculture.gov.ie), on the SFPA website at [www.sfpa.ie](http://www.sfpa.ie), from each SFPA Port Office and from the Fish Producers Organisations.

## Boat Markings

■ All boats must be clearly marked with the Port Registration Number on both sides of the bow as high as possible in Black letters and numerals on a white background or as an alternative in white letters and numerals on a black background.

For boats greater than 10m and less than 17m the letter height should be at least 25cm and line thickness 4cm.

## Gear Requirements

Square mesh panels in towed gear are required in accordance with the specific rules applicable in the area being fished and depending on target species, gear in use and catch composition:

- Demersal trawls, Danish seines or similar towed gear with a mesh size 70-79 mm must be fitted with a square mesh panel, with a mesh size of 80mm or greater.
- Square mesh panels are also required in certain circumstances in the restricted areas of ICES VIa. See Fisheries Information Notice (FIN) 01 of 2010 for further information.
- Marker buoys and similar floating objects intended to indicate the location of fishing gear must be clearly marked with the port registration number of the vessel to which they belong.

## Documentation

All fishing vessels must be Registered and have a valid Sea Fishing Licence. The Certificate of Registry and Sea Fishing Licence must be carried onboard. Some vessels may have restricted licences:

- P Licensed Vessels are restricted to fishing with Pots *only*.
- Vessels in the Aquaculture sectors have restrictions particular to the sector.

In all cases vessels must comply with the conditions set down in their licence.

All boats with an overall length of 10 meters or more are required to have onboard and complete an EU fishing logbook. The log-sheet and landing declaration for each trip shall be submitted to the SFPA within 48 hours of landing. Further information is provided in the BIM Logbook guide.

## Authorisations

• Specific vessel authorisations are required if using the following gear or fishing for the following species:

■ For vessels 10 meters and over, all fish stocks in ICES areas Vb, VIa and VIIa using:

- Bottom trawls and seines of mesh equal to or larger than 70mm or larger than 16mm and less than 32mm.
- Beam trawls of mesh larger than 80 to 120 mm.
- Gill nets, entangling nets, trammel nets and long-lines.

■ Vessels 10 meters and over if scallop are retained or landed in quantities greater than 10% by weight of catch. Vessels must have a track record of scallop fishing to obtain an authorisation.

■ All Vessels when fishing for the following stocks in any area: Mackerel, Herring, Horse Mackerel and Mussel Seed, except vessels under 15 meters in length fishing small quantities of mackerel by means of hooks and lines.

■ Requirements for Authorisations are subject to change, Vessel Masters should check the current ‘Determination of the Need for an Authorisation for Certain Fish Stocks’ issued from the DAFF and available at [www.agriculture.gov.ie](http://www.agriculture.gov.ie) or [www.sfpa.ie](http://www.sfpa.ie).

## Sales Notes

All buyers of First Sale Fish (i.e. fish that is offered for sale for the first time following landing from any vessel) must be registered with the Department of Agriculture Fisheries and Food (DAFF). Further information, including relevant links, is available in the FAQ section at [www.sfpa.ie](http://www.sfpa.ie)

■ First Sale Fish shall only be sold to a Registered Fish Buyer.

■ Only Registered and Licensed fishing vessels may sell first sale fish.

■ A sales note is *not* required from a person who buys no more than 10 kilograms of fish for private consumption in any one day.

## Transport Documents

■ Where fish is being transported to a place for first sale they must be accompanied by a Transport Document which includes the following information:

- Name and Registration number of landing vessel.
- FAO Code, Catch Area, Quantity in kg's and presentation of each species.
- Place and Date of Loading, Vehicle Identification and destination of consignment.
- Name and address of consignee.

**Note:** A copy of the vessel log sheet with a completed landing declaration may be used for this purpose.

■ For Vessels 10 meters and over, landings of Cod or Hake over 50kg being transported for first sale must also be accompanied by the relevant completed Landing Declaration.

## Marine Protected Areas.

Special Areas of Conservation and Special Protection Areas together form the Natura network. There are a large number that occur in Irish Territorial waters. Fishing operations that have the potential to damage these areas cannot proceed until such time as an appropriate assessment of the activities has taken place. Where the Minister publishes a Natura plan he/she may issue a declaration. A Natura declaration provides for the regulation of activities in the area subject to the plan. The Minister for Agriculture Fisheries and Food shall issue required Natura Permits.

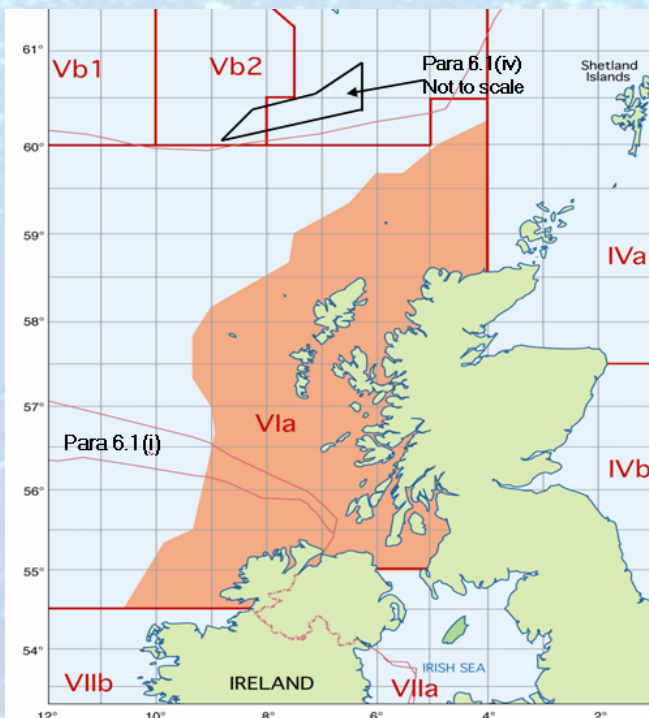
## Fishing Restrictions

**Bass:** An Irish Sea fishing boat operating in ICES area VI & VII shall not fish for, retain onboard, transship or land bass. No person shall sell or offer for sale bass other than bass which has been imported into the state.

**Crawfish** *Palinurus spp.*, Crawfish may not be caught by means of net or landed in specific delineated areas of the Galway and Kerry Coast. Full details of the specific areas are provided in the 'Crawfish (Fisheries Management and Conservation) Regulations, 2006' available on [www.sfpa.ie](http://www.sfpa.ie) or from your local Port Office.

**Skates and Rays:** It is illegal to catch, retain on board, land or tranship the Common Skate (*Dipturus batis*), Norwegian or Black Skate (*Raja (Dipturus) nidarosiensis*), Undulate Ray (*Raja undulata*), Spiny Dogfish (Spurdog) (*Squalus acanthias*), Porbeagle Shark, (*Lamna nasus*), Angel Shark (*Squatina squatina*) and certain other species For full details see [www.sfpa.ie](http://www.sfpa.ie)

**Cod, Haddock and Whiting:** With certain exceptions, detailed in FIN 01-2010, it is prohibited to conduct any fishing in the specific delineated area of ICES Zone VI: 'West of Scotland', described in the map below:



## Fish and Shellfish: species specific notes

**Shrimp** *Palaemon spp.*: during the closed season from May 1<sup>st</sup> to August 1<sup>st</sup> it is prohibited to fish, have on board or land shrimp.

**Lobster:** An Irish sea-fishing boat or a person on board such boat shall not retain on board a lobster whose tail has been V notched or mutilated.

**Edible Crab** *Cancer pagurus*: For catches of edible crabs made by pots or creels, a maximum of 1 % of edible crab claws by weight of catch of edible crabs onboard may be retained. For catches of edible crabs made by any fishing gear other than pots or creels, a maximum of 75 kg of detached edible crab claws may be retained

**Mackerel:** A vessel less than 15 metres in length overall, or a person on board that vessel, fishing by means of hooks and lines, may, without a Mackerel authorisation, retain on board or land up to 500 kg in any fishing trip.

**Cod:** A person shall not land more than one tonne of cod without authorisation from a Sea-Fisheries Protection Officer.

**Cod taken from the Cod Recovery VIa & VIIa area:** The skipper is responsible for weighing all quantities of Cod 300kg and over on landing.

**Monk, Hake, Cod:** Must be identified and stowed separately onboard.

## Hail Requirements

Hails are normally required 4 hours before entering port/landing, specific details are described in FIN 06-09 available on [www.sfpa.ie](http://www.sfpa.ie) or from your local Port Office.

Certain landings may only be made at designated ports. For full details of species designated ports refer to your local SFPA office or [www.sfpa.ie](http://www.sfpa.ie)

**Pelagic species.** Mackerel, Horse Mackerel, Herring: For vessels which require Authorisations 4 hour's notice of entry into Port is required for all landings. Landings of 10,000kg and over to be made into designated ports only.

**Celtic Sea Sentinel Herring Fishery:** One hour's notice of entry into port is required.

**Cod from Cod Recovery area:** Hail required for all Cod in excess of 1000kg plus all species on board in excess of 50kgs. Landing to designated port only with quantities greater than 2000kg.

**Hake from all areas:** Hail required for all Hake over 2000kg and all species on board in excess of 50kg. Landings into designated port only with quantities greater than 2000 kg.

**Monkfish all areas:** Hail required for all Monk over 150kg. Landings into designated port only with more than 750kg.

## Effort Recording

Fishing vessels 10 metres and over working in the Biologically Sensitive Area (BSA), fishing for demersal species, scallops or crabs, and all vessels 10 metres and over operating in the Cod recovery area (ICES Areas VIa and VIIa) are required to record the following fishing effort details in their EU logbook:

- Masters name, vessel name, geographical position (Lat/Long), port registration number, radio call sign, target species, all catch on board in kg's., date and time of each entry and exit of the BSA or a port in the BSA or the Cod Recovery area.
- For trans-zonal fishing the first entry and last exit in 24 hours is sufficient.

Vessels operating static gear must also record:

- Date and Time of setting or re-setting gear
- Date and time of completing fishing using static gear.
- Effort recording is not required for vessels targeting pelagic species.

## Effort Reporting

In addition, fishing vessels 10 metres and over working in the BSA (Area J on the Map below), fishing for demersal species, scallops or crabs, and all vessels 10 metres and over operating in the Cod recovery area are required to transmit the following information to the Fisheries Monitoring Centre in the form of an effort report:

- Vessel Name, Port Registration Number, radio call sign, Master's name and location.
- Date and time of entry/exit and the catch retained onboard by species in KG's.

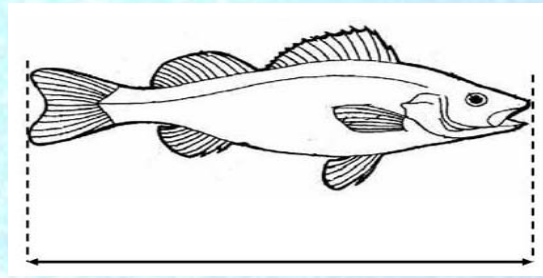
Further details on Effort Reporting are available on [www.sfpa.ie](http://www.sfpa.ie)



Effort Reports and Hail Notifications shall be made to the Fisheries Monitoring Centre at:  
Tel 1890 252 081  
Fax 021 437 8096  
online  
<https://admin.eircomsp.eechsolutions.com>

## Minimum Landing Sizes

The minimum sizes at which fish and shellfish may be retained on-board and landed are described in the tables below. Undersize fish cannot be retained on board for any reason including for use as bait. Methods for measuring fish and shellfish are illustrated in the adjacent diagrams, further detail is available at [www.sfpa.ie](http://www.sfpa.ie) or from your local Sea-Fisheries Protection Officer.



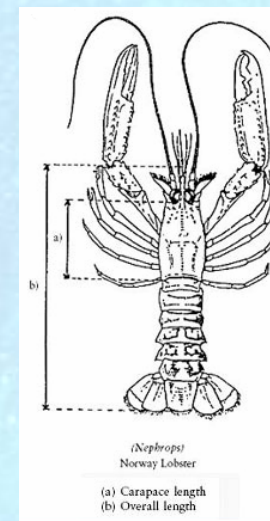
The total length of any fish shall be measured as shown, from the tip of the snout to the end of the tail fin.

## Minimum Size: Shellfish Species

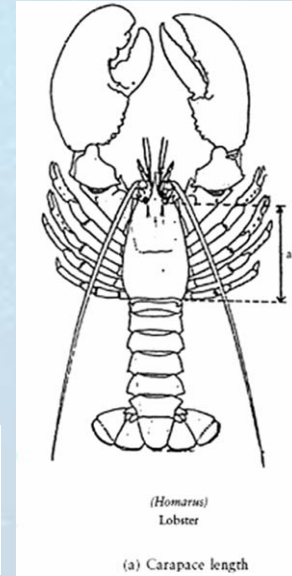
Name	Scientific Name	FAO Code	Minimum Size (mm)
Queen Scallop	<i>(Chlamys spp.)</i>	QSC	40
Clam	<i>(Venus verrucosa)</i>	CLX	40
Cockle	<i>(Cerastoderma edule)</i>	COC	Refer to local area management provisions.
Razor Clam	<i>(Ensis spp., Pharus legumen)</i>	RAZ	100
Whelk	<i>(Buccinum undatum)</i>	WHE	45 length or 25 diameter
Scallop	<i>(Pecten maximus)</i>	SCE	All ICES VI and VII: 100 Vlla north of 52°30'N 110
Native Oyster	<i>(Ostrea edulis)</i>	OYF	76
Edible Crab	<i>(Cancer pagarus)</i>	CRE	130
Spider Crab	<i>(Maja squinado)</i>	SCR	130 (male) 125 (female)
Crawfish	<i>(Palinurus spp.) Irish Vessels</i>	CRW	110
Lobster	<i>(Homarus gammarus)</i>	LBE	87
Dublin Bay Prawn	<i>Nephrops norvegicus ICES VIa and VIIa</i>	NEP	70 (Total length) 20 (Carapace Length) 37 (Prawn Tail)
Dublin Bay Prawn	<i>All other ICES areas</i>	NEP	85 (Total length) 25 (Carapace Length) 46 (Prawn Tail)

## Minimum Size: Fish Species

Name	Scientific Name	FAO Code	Minimum Size (cm)
Cod	<i>(Gadus morhua)</i>	COD	35cm
Conger Eel	<i>(Conger conger)</i>	COE	58cm
Black Pollack	<i>(Pollachius virens)</i>	POK	35cm
Haddock	<i>(Melanogrammus aeglefinus)</i>	HAD	30cm
White Pollack	<i>(Pollachius pollachius)</i>	POL	30cm
Hake	<i>(Merluccius merluccius)</i>	HKE	27cm
Whiting	<i>(Merlangius merlangus)</i>	WHG	27cm
Sole Species	<i>(Solea spp.)</i>	SOL	24cm
Plaice	<i>(Pleuronectes platessa)</i>	PLE	27cm
Megrim	<i>(Lepidorhombus spp.)</i>	LEZ	20cm
Ling	<i>(Molva molva)</i>	LIN	63cm
Mackerel	<i>(Scomber scombrus)</i>	MAC	20cm
Herring	<i>(Clupea harengus)</i>	HER	20cm
Horse Mackerel	<i>(Trachurus trachurus)</i>	JAX	15cm
Pilchard	<i>(Sardina pilchardus)</i>	PIL	11cm



**Nephrops:** Detached tails to be measured flat, unstretched and on the dorsal side.



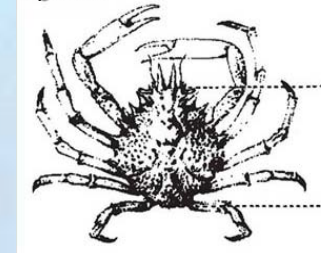
## Whelk



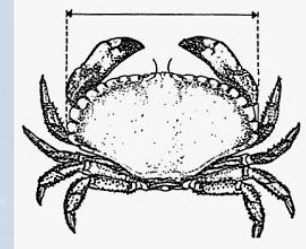
## Bivalve Molluscs



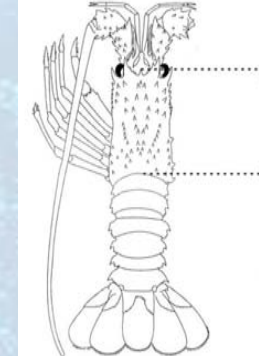
## Spider Crab



## Edible Crab



## Crawfish



## Prohibition on Skin Diving for Shellfish

It is prohibited to take or attempt to take shellfish by means of skin-diving, using apparatus or equipment of any kind which enables a person, while immersed in water to breathe without returning to the surface.